

Screenprinting Artwork & Design Detail



All the information that is entered on the 3 tabs of the Design Detail window will show up on the 'WO Design Detail' printed form

You can access the special Design Detail options available from screenprinting from the 'Screen Print Setup' tab of the Design Detail window:

Ink Swap

Sometimes you need to print the same designs on different background colors. In this case, it may become necessary to “swap out” a certain Ink for a different color. You can do this with the **Ink Swap** feature:

Click on Add/Edit Detail

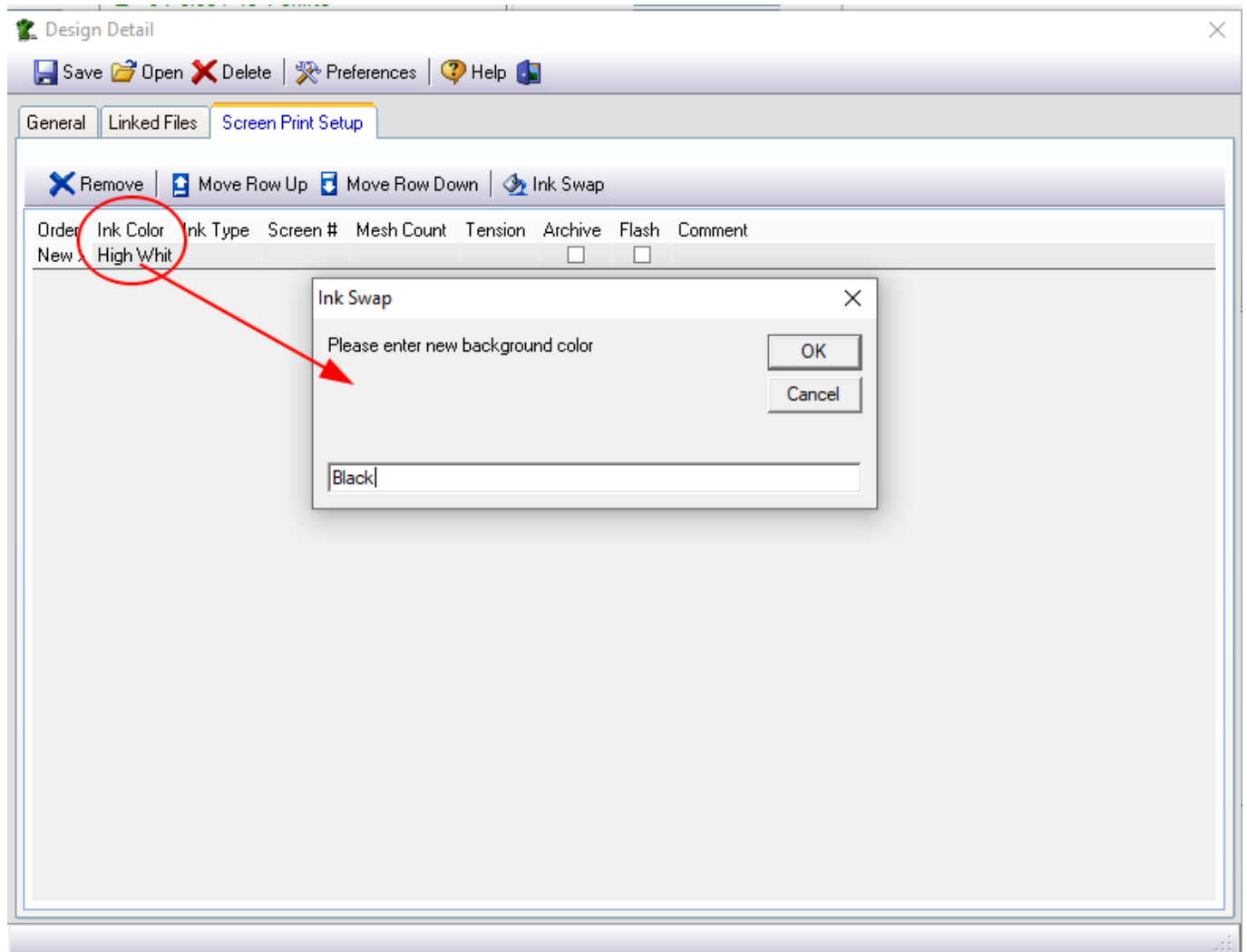
- go to the Screen Print Setup tab
- Click on Ink Swap
- enter the *background color* of the garment or items being printed

The screenshot shows the FastManager software interface. The main window has a menu bar (View, Reports, Window, Help) and a toolbar. On the left, there's a customer information section and a list of items. The 'Design Detail' window is open, showing the 'Screen Print Setup' tab. The 'Ink Swap' button is highlighted with a red arrow. A context menu is open over the 'Ink Swap' button, showing options: 'Add New Shirt Color' and 'Copy Ink Colors From...'. Another red arrow points to the 'Add Detail' button in the main list of items.

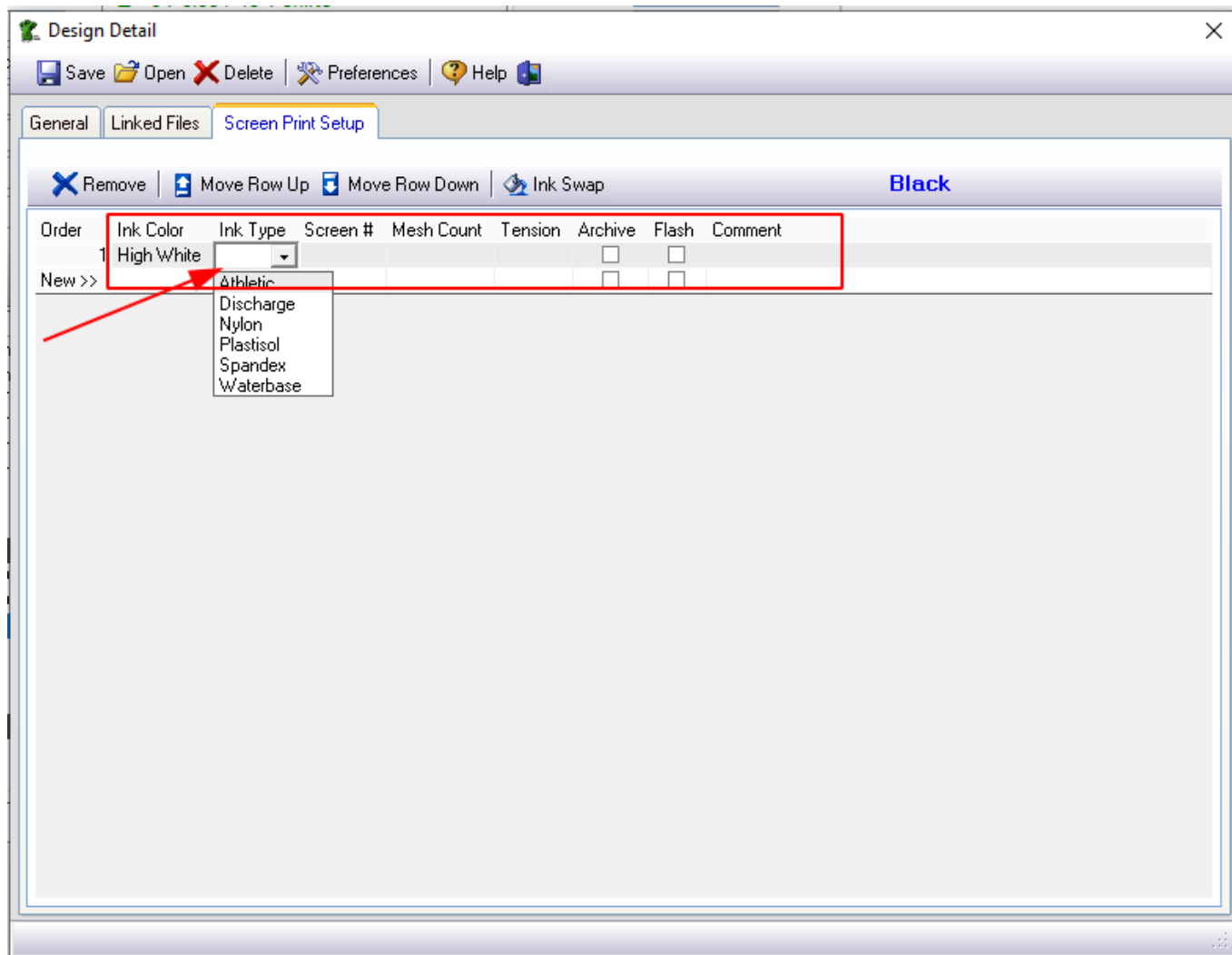
Style	Description
1 LST405	Sport-Tek Ladies PosiCh
2 LST405	Sport-Tek Ladies PosiCh
3 ST405	Sport-Tek PosiCharge T
4 ST405	Sport-Tek PosiCharge T
5 ST405	Sport-Tek PosiCharge T
6 ST405	Sport-Tek PosiCharge T
7 Add Detail	Standard Embroidery
8 Add Detail	Embroidery Digitizing
9	Separator Line
10 DM130	District Perfect TriTee. D
11 DM130	District Perfect TriTee. D
12 Add Detail	1 Color Transfer
13	Transfer Setup
14 Add Detail	1 Color Transfer
15	Transfer Setup
16	Separator Line
17	Logo Setup



If you go directly to enter an Ink Color, FastManager will prompt you for a new background color.



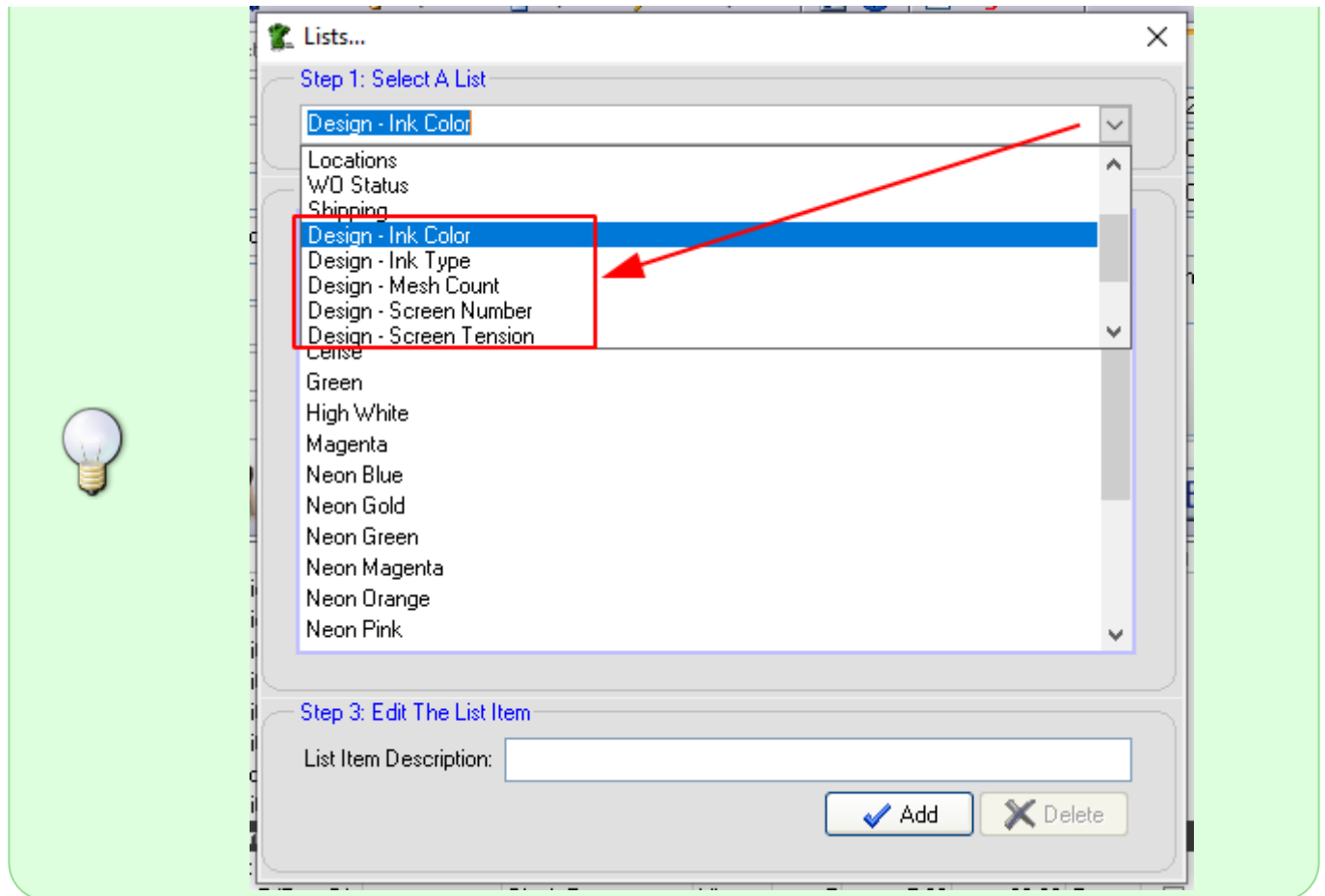
Now you can enter the various details under each of the other columns.



You are not limited to selecting only from the options available in each list - you can simply type anything you want into each column

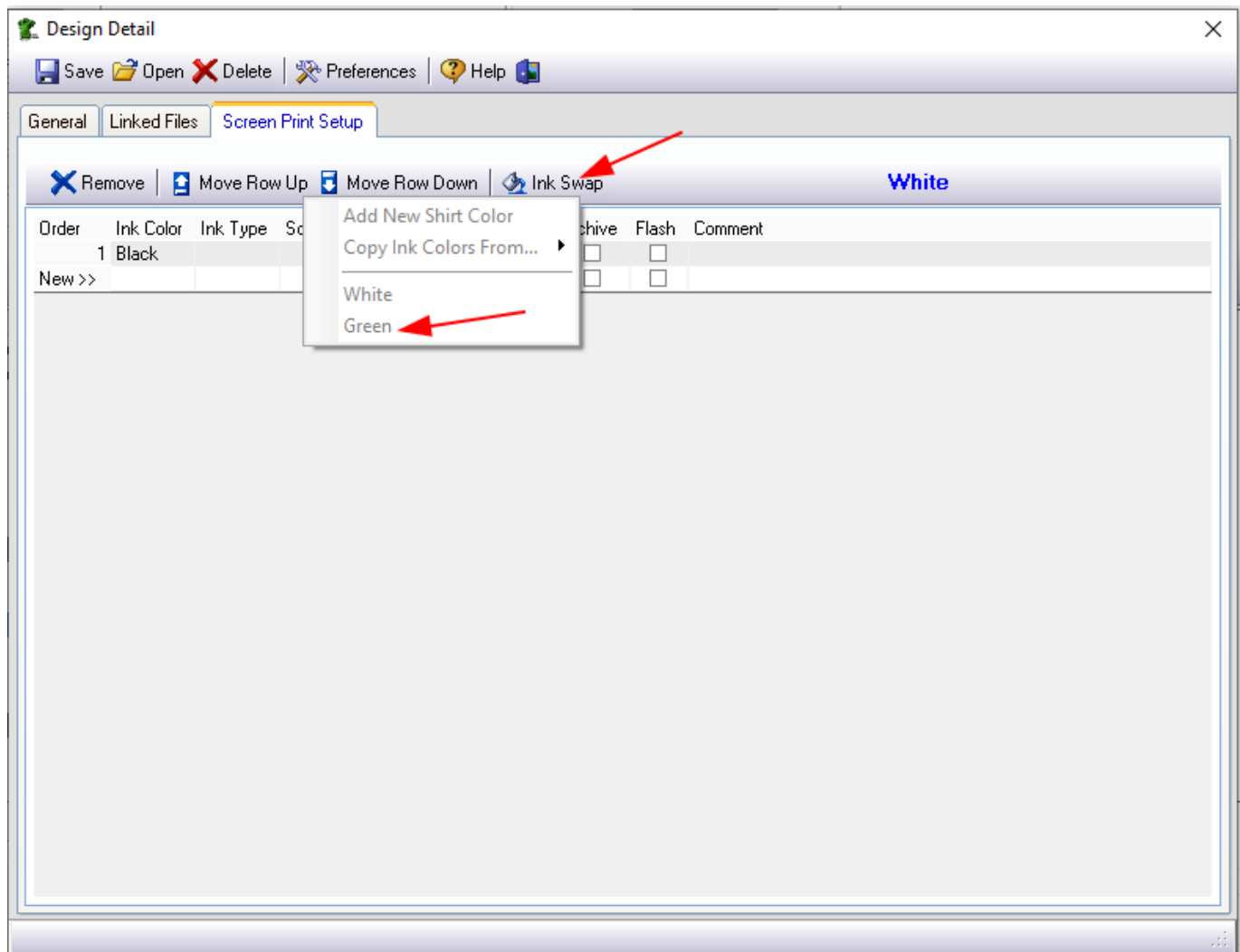
You can change the options available in each dropdown at: Edit → Lists (search for the particular list you would like to edit, such as: "Design - Ink Colors")



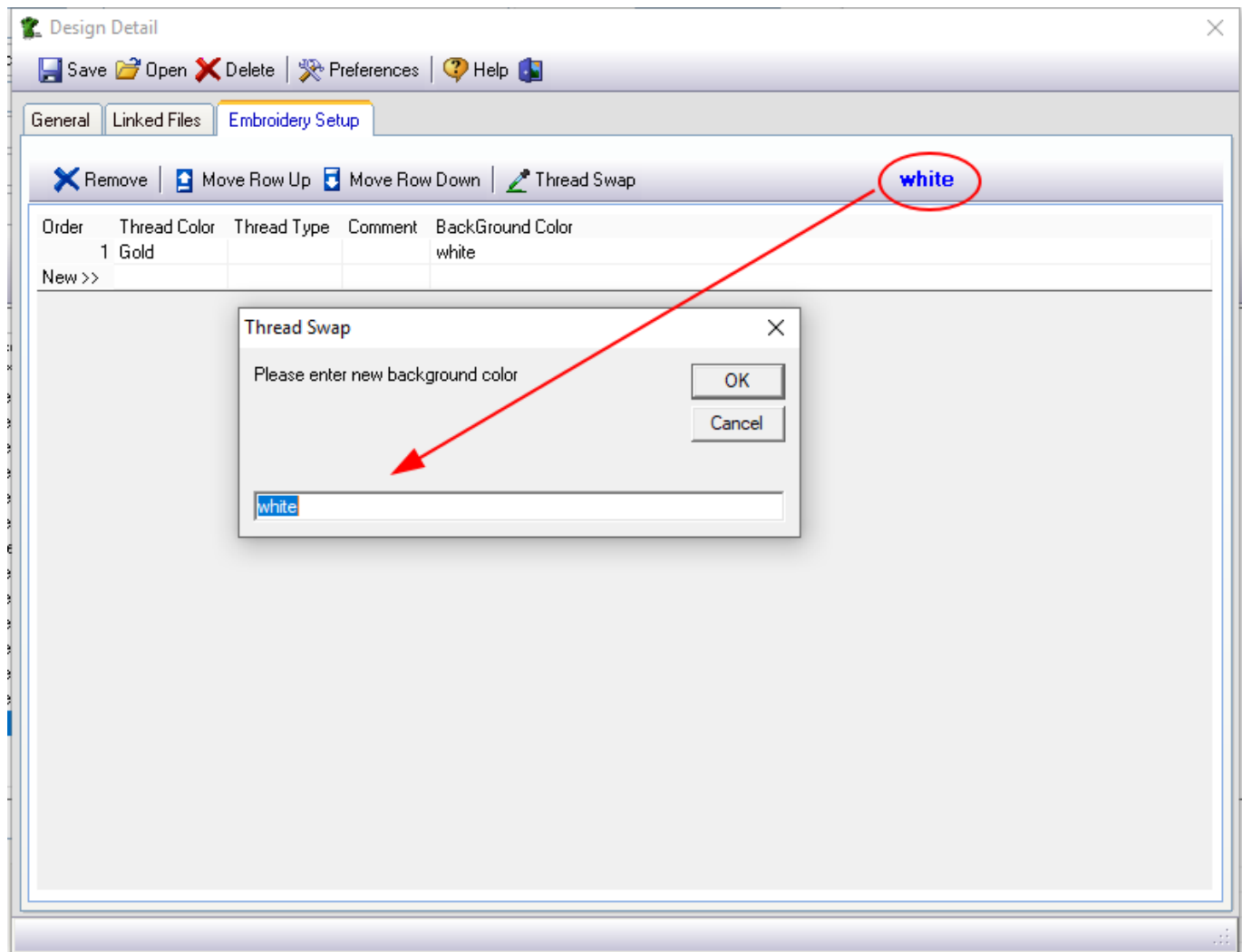


If the items you are printing this design onto have a variety of background colours, you can click on Ink Swap again and then on Add New Shirt Color to additional background colors

To switch between background colors, for example: in order to make changes to the ink colors or other details as it pertains to a particular background - click on Ink Swap and then on the background color you want to edit the details for:



You can see which background color you are working with indicated in *BLUE* text, and you can also change the description of the background color if you click on it:



Back to [Artwork & Design: Overview](#)

From:

<https://docs.fastmanager.com/> - **FastManager Help Manual**

Permanent link:

<https://docs.fastmanager.com/sales/artwork/screenprinting>

Last update: **2020/09/29 09:07**

